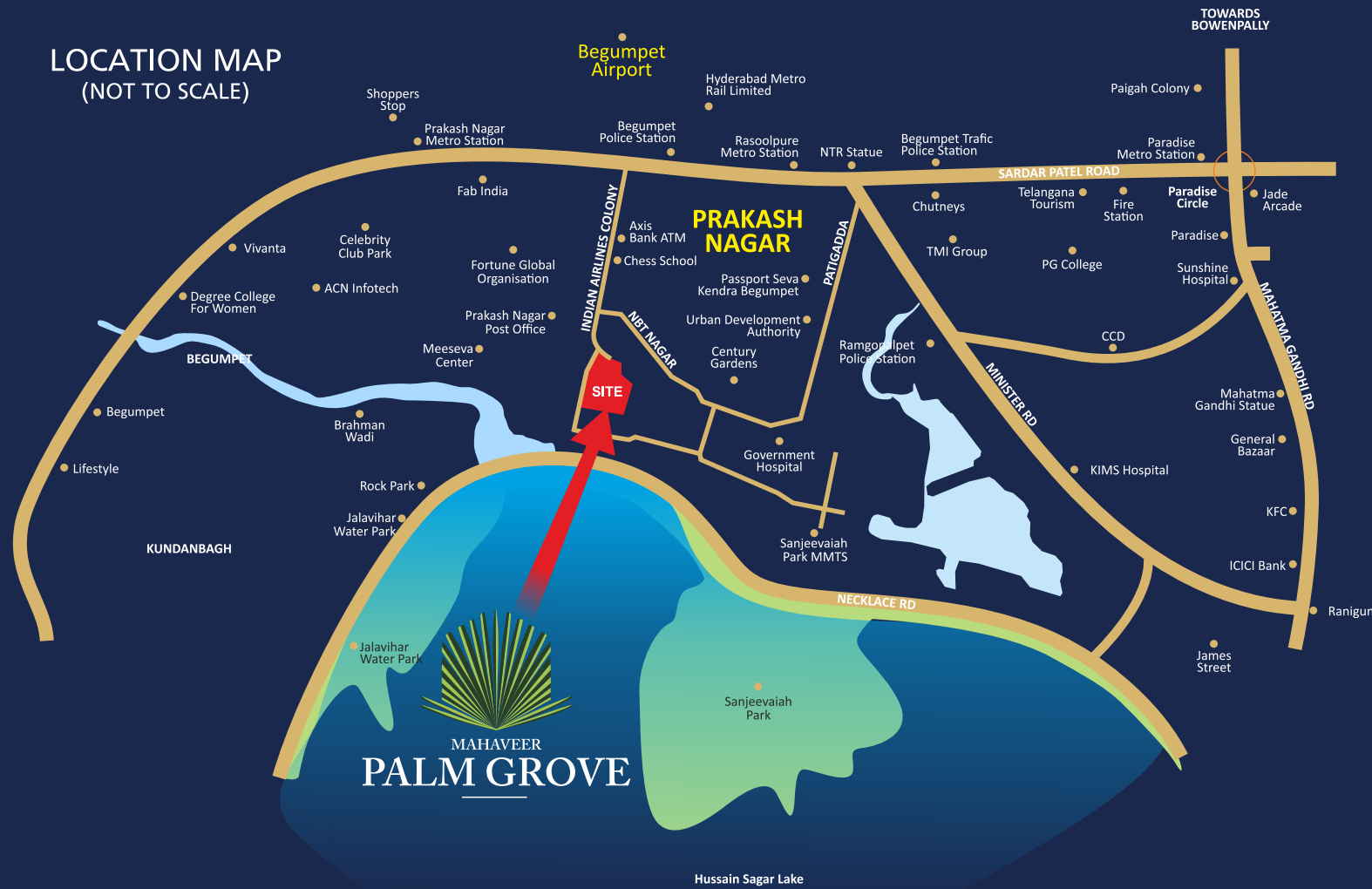


*its the place to be  
today and tomorrow*

LIVING CENTRAL & HAPPENING

LOCATION MAP  
(NOT TO SCALE)



**EDUCATIONAL INSTITUTIONS**

- ▲ Delhi Public School
- ▲ Hyderabad Public School
- ▲ Degree College
- ▲ Geetanjali School
- ▲ Glendale Educational Inst.
- ▲ SV College
- ▲ Loyola Academy
- ▲ NIIT University

**HEALTH CARE**

- ▲ Gandhi Hospital
- ▲ KIMS Hospitals
- ▲ Yashoda Hospitals
- ▲ Sunshine Hospitals
- ▲ Apollo Hospital

**LIFESTYLE**

- ▲ Shopper Stop
- ▲ Lifestyle
- ▲ Hyderabad Central
- ▲ Inox
- ▲ Lumbini Park

**CONNECTIVITY**

- ▲ Secunderabad Railway Station
- ▲ Jubilee Bus Stand
- ▲ Metro Stations



**MAHAVEER**  
Finest Homes & Honest Practices

# A FUSION OF LIFE

PERFECT HARMONY | AWESOME SYNCHRONIZATION



**MAHAVEER**  
Finest Homes & Honest Practices

Corporate Office

8-2-277/B/1, 3rd floor, Road No 2,  
Banjara Hills, Hyderabad-500034.

Call : **7997722911/22/33**

Email id : [sales.hyd@mahaveergroup.in](mailto:sales.hyd@mahaveergroup.in)

[www.mahaveergroup.in/hyderabad](http://www.mahaveergroup.in/hyderabad)

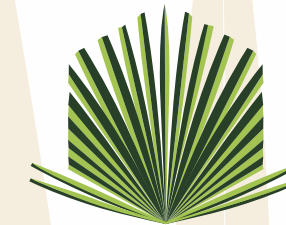
Site Address

Sy.No. 194/1, Prakash Nagar,  
Begumpet, Secunderabad-500016.

Architect



crafted by | 031 | +91 98491 92657



**MAHAVEER  
PALM GROVE**

THE ICON OF LUXURY LIVING @ BUGUMPET, HYDERABAD

This document has been produced by the developer for advertising and general information only. The developer and its project team do not guarantee, warrant or represent that the information contained within this document is correct. Any interested party should undertake their own enquiries as to the accuracy of this information. The developer excludes unequivocally all inferred and implied terms, conditions and warranties arising out of this document and excludes all liability for loss or damage arising there from. Images shown are Artist Impression and shown for illustrative purposes only. The plans are based on the current design for this development. Changes will undoubtedly be made through development, and dimensions, fittings, finishes and specifications are subject to change without notice. The location of all architectural features on the façade including vertical panels and fins will vary on each type plan and level. Their location on the marketing material is indicative of the design intent. The information contained herein is believed to be current, but is not guaranteed. Prospective purchasers must rely on their own enquiries. Furniture is not included. This document is for guidance and does not constitute an offer of contract.



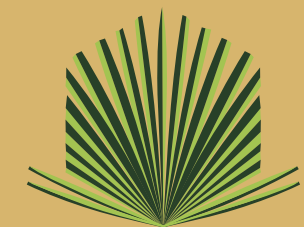




# A Life in style

The Palm Grove residential building is the manifestation of Mahaveer Group's continued passion and commitment to well detailed and designed residences in the heart of Begumpet. Mahaveer Palm Grove Residential building is moments away from Begumpet main road in Prakesh nagar, which is centrally located between Twin cities. Palm Grove commands a signature position in the neighborhood and close to city's popular location Tankbund, Sanjevaiah park.

It consists of 252 spacious 2 & 3 BHK apartments in a beautiful landscaped surrounding with resort-style pool, children's play area, superb fitness center with many more features in the clubhouse. This spacious contemporary apartment receives lots of day light with vast balconies. Come to Mahaveer Palm Grove and explore the life in style and luxury.



MAHAVEER  
**PALM GROVE**



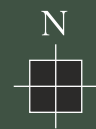


*The blend of  
Sophistication  
and luxury*

**LEGEND**

- 1 Entrance
- 2 Visitors Car Parking
- 3 Pathway
- 4 Cricket Net Practice
- 5 Children's Play Area 1
- 6 Clubhouse
- 7 Swimming Pool
- 8 Volley Ball Court
- 9 Half Basket Ball Court
- 10 Sand pit/Children's play area 2
- 11 Badminton Court

*Master Plan*



*The blend of leisure,  
and luxury*

14,000SFT OF METICULOUS CRAFTING AND DEEP RESONANCE

The pool-side Clubhouse features, five storeys of exquisitely designed lifestyle options. From well equipped facilities to memorable experiences, the Clubhouse is a perfect setting for celebrating life and rejuvenating yourself with Splendid designs of indoor games and a gymnasium that gives you glimpses of the pristine pool while you work-out.

**LUXURY FEATURES**

Multi-purpose Hall | Indoor Games | Well-Equipped Gymnasium/Health Club  
Super Market/Café | Crèche | Guest Rooms



**PROJECT HIGHLIGHTS**

- ▲ 3 Majestic blocks of luxury in 3+ Acres
- ▲ 65% Open space
- ▲ 2 Cellars + G + 5 Floors
- ▲ 252 Units
- ▲ 2 & 3 BHK Apartments
- ▲ 1200 to 2000 sft. Unit sizes
- ▲ 14000 sft Premium Club house
- ▲ Well equipped children's play area
- ▲ Jogging track
- ▲ Visitors car parking
- ▲ Rainwater harvesting
- ▲ Integrated DTH system

**OUTDOOR SPORTS & FEATURES**

- ▲ High Speed Internet provision
- ▲ Solar lighting for common areas
- ▲ Sewage treatment Plant
- ▲ Water treatment plant
- ▲ Firefighting system as per Govt. fire & safety norms.

- ▲ Volley Ball Court
- ▲ Exclusive Children's Play Area
- ▲ Half Basketball Court
- ▲ Badminton Court
- ▲ Cricket Net Practice

**LANDSCAPE**

- ▲ Aesthetically Designed Landscape Garden
- ▲ Community Entrance Gate
- ▲ Tot-lot Surrounding
- ▲ Lawn with Pathway
- ▲ Club House Area



## BLOCK - A FLOOR PLAN



## BLOCK - B FLOOR PLAN



## KEYPLAN



## BLOCK - C FLOOR PLAN



## Specifications



**Structure**  
RCC framed structure  
Solid block masonry 6 inch for external walls and 4 inch for internal walls.

**Doors**  
All doors with best quality pre-hung factory finished door frames and shutters with veneer/laminate finish.

**Hardware**  
• Premium Quality locks of reputed make and exotic hardware fitting for main door.  
• All the doors are fitted with standard quality SS Hardware fittings and locks with handles.

**Windows**  
• UPVC windows with glass panels & mosquito mesh.  
• UPVC French windows with mosquito mesh.  
• All the windows are fixed with powder coated MS safety grills.

**Balconies**  
SS Glass railing for all balconies except utility area balcony.

**Plastering**  
• External : Water proof sponge finish  
• Internal : Smooth plastering with putty

**Flooring**  
• 800mm x 800mm Double charged vitrified tile flooring in living, drawing, dining, bedroom and kitchen.  
• High quality ceramic tile flooring in balconies and utility.  
• Laminated Wooden flooring in MBR & Home theatre.  
• Anti-skid Ceramic tile flooring in all toilets.  
• Granite/Vitrified tile flooring in the entrance lobby, lift lobby and corridor.

**Painting**  
• Interior : Premium Emulsion paint with roller finish  
• Exterior : Weather proof paint  
All the railings and window grills with enamel paint

**Toilet**  
• 300mm x 600mm Ceramic glazed tile dado up to false ceiling  
• Washbasin in all bathrooms.  
• Wall mounted EWC with concealed flush tank of Kohler or equivalent make.  
• Kohler or equivalent sanitary fittings.  
• Grohe/Kohler or equivalent CP fittings.

**Kitchen**  
• Granite platform with Stainless Steel sink with single bowl.  
• Dado up to 2feet above the cooking platform.  
• Provision for Washing machine in utility-Power point, Water supply and Drain will be provided.  
• Provision for sink in utility-Water supply and Drain will be provided.  
• Provision for RO in kitchen-Power point, Water supply will be provided.  
• Piped gas connection through metered gas bank.

**Utility**  
• Provision for Dish washer and washing machine.  
• Premium quality glazed ceramic tile dado in utility area.

**Electrical**  
• Supply of power TSSPDCL.  
• Split AC provision for all Bed rooms, Home theatre and livingroom - Power point and sleeve for A/C unit will be provided.  
• Provision for TV, Telephone points in Living & All Bed rooms  
• Premium quality distribution boards & MCB's shall be of reputed make.  
• FRLS Wires of polycab or equivalent make.  
• Provision for chimney, refrigerator, microwave & exhaust fan in kitchen.  
• Elegant designer modular Electrical switches of Gold medal or equivalent make.  
• 100% Power backup with DG for all flats and common area.  
• Metered water supply, gas supply and power supply(power backup) from DG set to all the flats.

**Lift**  
• Automatic Lifts of Kone / Otis / Reputed make with emergency rescue device

**Security System**  
• Round the clock security, 24 hours surveillance,  
• integrated CC TV  
• Intercom Facility to all the units connecting to security room.

**Others**  
• Integrated DTH system to be accepted as decided by builder  
• High speed internet provision to be accepted as decided by builder  
• Solar lighting for outdoor common areas  
• Sewage treatment Plant  
• Water treatment plant  
• Firefighting system as per Telangana state fire & safety norms

14,000sqft.  
Premium Club House

High end  
Finishes

High Demand  
Lifestyle Design

2 & 3 BHK  
Luxury Apartments

Peaceful &  
Green Areas

Desirable  
Location

65%  
Open Space

100%  
Vaasthu

Well Connected

Child Friendly  
Secured community  
Play safe design  
themes

Active & Natural  
Lifestyle

Exclusive Amenities  
at your Doorstep